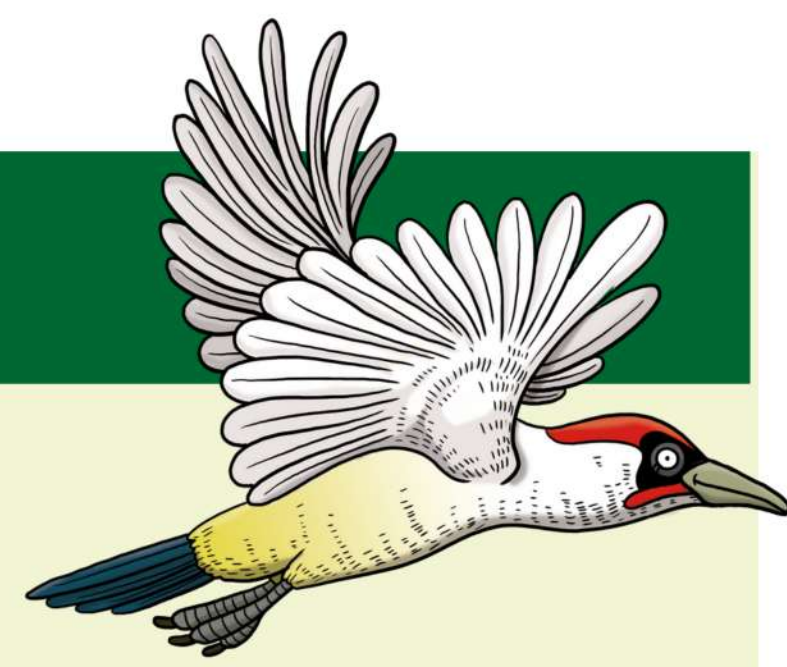


# JANUARY



Chase the winter blues in the company of our flying friends. How about birdwatching (and listening!) in your Tiny Forest?

## ACTIONS

- Tiny Forest: check safety & accessibility
- Nature: birdwatching, make nest boxes
- Community: wellbeing check (invite your neighbours or family for a walk)

## WEBINAR

- State of Nature Report Breakdown

• Recurring webinars: Tree Keeper Induction - 2nd Monday of every month (5pm-6pm) | Tree Keeper Network Chat - 4th Monday of every month (5pm-6pm)

# FEBRUARY

This Valentine's Day, show your love for nature and feel the love back! Visit your Tiny Forest with your date, family or friends.



On International Women's Day, encourage more women, especially from BAME backgrounds, to engage in Tiny Forest citizen science.

## ACTIONS

- Tiny Forest: loosen tight tree tags
- Nature: carry out carbon survey
- Community: reflect on the benefits of nature connectedness

- Monitoring Season Research Wrap Up

# MARCH

## ACTIONS

- Tiny Forest: do ground dweller survey
- Nature: think about helping hedgehogs
- Community: share citizen science opportunities in Tiny Forest

- Tiny Forest Monitoring - Deep Dive

# APRIL

Gather your community and take action for Earth Day. Or make a collective impact of One Million Acts of Science during Citizen Science Month this April!

## ACTIONS

- Tiny Forest: catch-up carbon survey
- Nature: add water plants to a pond
- Community: raise awareness for the planet on Earth Day

- Biodiversity Survey Training

# MAY



Encourage people to record pollinators and butterflies in your Tiny Forest during Biodiversity Week 18 - 26 May.

## ACTIONS

- Tiny Forest: conduct biodiversity survey
- Nature: learn about insects
- Community: improve mental wellbeing by tapping into powers of nature

## WEBINAR

- Behaviour of Buzzing Bees

• Recurring webinars: Tree Keeper Induction - 2nd Monday of every month (5pm-6pm) | Tree Keeper Network Chat - 4th Monday of every month (5pm-6pm)

# JUNE

Seek inspiration from Sweden (Midsommer) and make a wreath of flowers, walk barefoot, play games, dance, and eat early summer treats in your Tiny Forest!

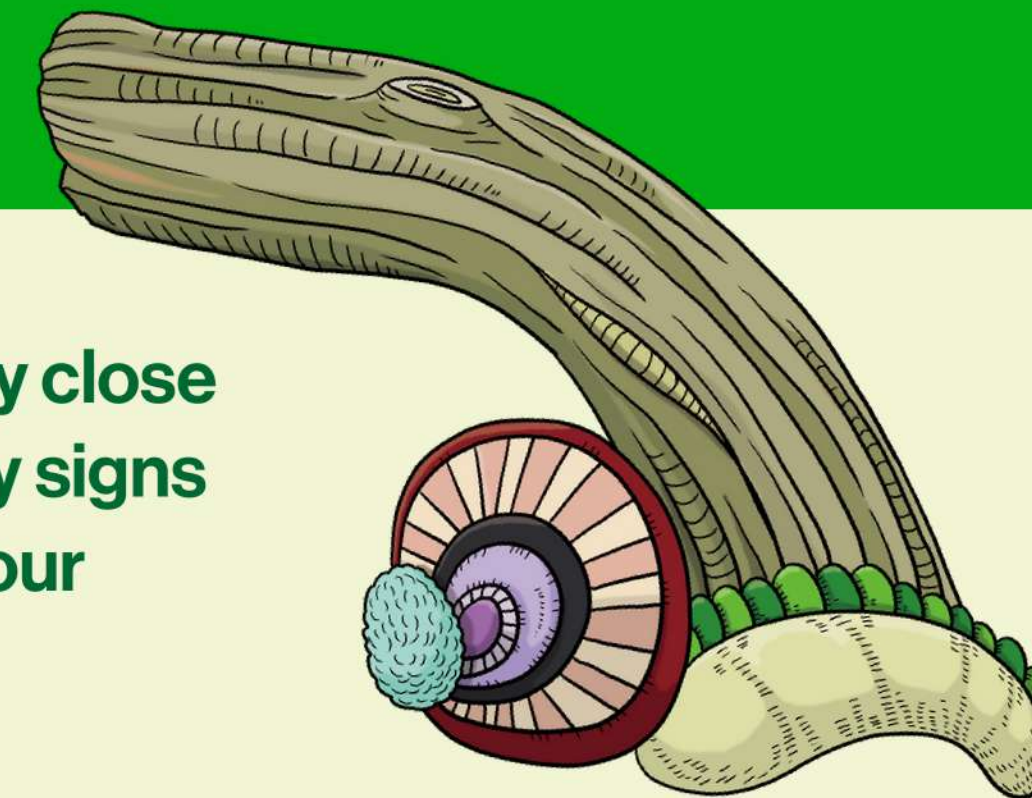
## ACTIONS

- Tiny Forest: check mulch layer
- Nature: schedule regular weeding in younger Tiny Forests
- Community: summer solstice party

- Biodiversity Week Research Wrap up

# JULY

This month, pay close attention to any signs of drought in your Tiny Forest.



## ACTIONS

- Tiny Forest: check for signs of drought and water the trees if necessary
- Nature: conduct flood mitigation survey
- Community: plastic-free morning tea party

- Tiny Forest Scientists: Ask Us Anything

# AUGUST

August is when your Tiny Forest is dense and green. This means an explosion of biodiversity! Why not do another pollinator survey?

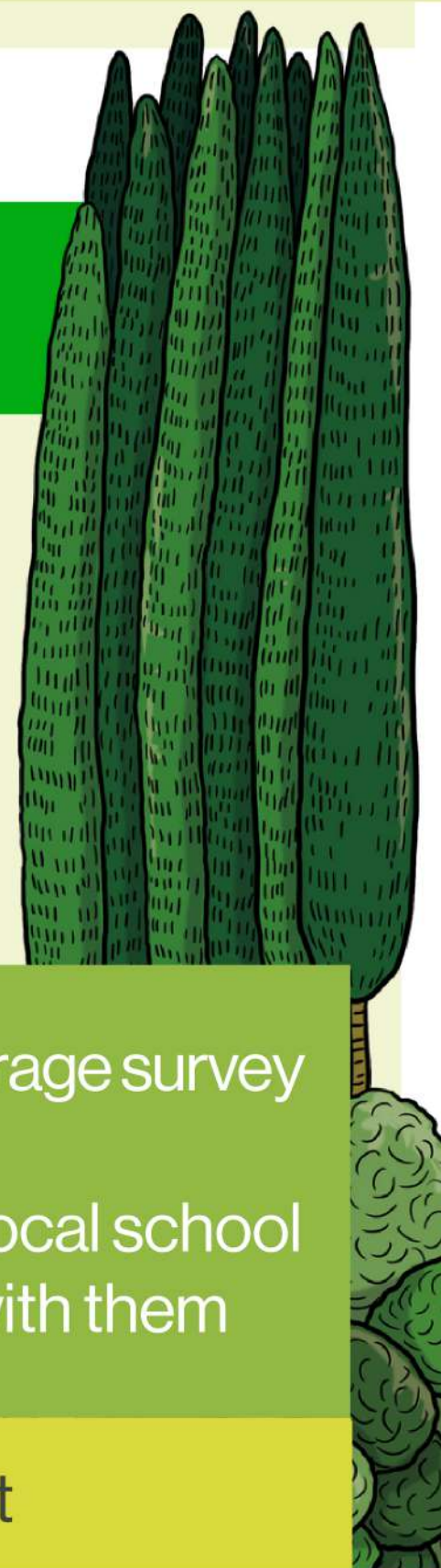
## ACTIONS

- Tiny Forest: conduct a butterfly count
- Nature: give 'mothing' a try
- Community: organise a storytelling session in your Tiny Forest

- Carbon Week Training

# SEPTEMBER

It is time to check final numbers – how much have the trees grown over the summer? Measure trees during Carbon Week 21-29 September.



## ACTIONS

- Tiny Forest: conduct carbon storage survey
- Nature: loosen tight tree tags
- Community: reach out to your local school and conduct a carbon survey with them

## WEBINAR

- Autumn Activities in Tiny Forest

• Recurring webinars: Tree Keeper Induction - 2nd Monday of every month (5pm-6pm) | Tree Keeper Network Chat - 4th Monday of every month (5pm-6pm)

# OCTOBER

October is a spectacle for our senses! Enjoy the show of colours in your Tiny Forest – remember to let the leaves stay on the ground as they provide habitat and add nutrition to the soil.

## ACTIONS

- Tiny Forest: admire the autumn colours
- Nature: talk to your council & install a pond
- Community: be inspired by your Tiny Forest and get arty!

- Carbon Week Research Wrap up

# NOVEMBER

As things slow down for the winter, now is a good time to practice self kindness. Visit your Tiny Forest, alone or with your friends, and reflect on what kindness means in our lives.

## ACTIONS

- Tiny Forest: conduct flood mitigation survey and compare your findings from July
- Nature: build a hedgehog house
- Community: encourage self-kindness

- Flood Mitigation & Thermal Comfort Training

# DECEMBER

December is a festive month! Celebrate Tree Dressing Day or Hindu tradition of Raksha Bandhan, Japanese tanzaku, Christmas tree decorating, or even 'yarn bombing'!

## ACTIONS

- Tiny Forest: forage for blackthorn berries
- Nature: take part in 12 Days Wild
- Community: celebrate trees by tree dressing with your community



## National days and weeks you can celebrate in your Tiny Forest

### JANUARY

25 Dec - 5 Jan: 12 Days Wild  
8 Jan - 19 Feb: RSPB Big Schools Birdwatch

26-28 Jan: RSPB Big Garden Birdwatch

### FEBRUARY

5-11 Feb: Children's Mental Health Week  
11 Feb: International Day of Women & Girls in Science

19 Feb: Big Schools Birdwatch deadline

### MARCH

3 Mar: World Wildlife Day

20 Mar: World Rewilding Day

21 Mar: International Day of Forests

### APRIL

1-30 Apr: Citizen Science Month

7 Apr: World Health Day

22 Apr: Earth Day

### MAY

1-31 May: No Mow May

23 May: Outdoor Classroom Day

20 May: World Bee Day

22 May: World Biodiversity Day

### JUNE

1-30 Jun: 30 Days Wild

5 Jun: World Environment Day

8-16 Jun: Great Big Green Week

24-30 Jun: National Insect Week

### JULY

1-31 Jul: Plastic Free July

12 Jul-4 Aug: Big Butterfly Count

20 - 28 Jul: National Moth Week

28 Jul: World Nature Conservation Day

### AUGUST

4 Aug: Big Butterfly Count deadline

14 Aug: World Lizard Day

17 Aug: World Honey Bee Day

### SEPTEMBER

23 Sep - 23 Oct: Seed Gathering Season

23-29 Sept: FSC Forest Week

26 Sep: World Environmental Health Day

### OCTOBER

1-31 Oct: Squirrel Awareness Month, Bat Appreciation Month

5 Oct: UK Fungus Day

6-12 Oct: Mental Health Awareness Week

21 Oct: World Earthworm Day

### NOVEMBER

7 Nov: Outdoor Classroom Day

26 Nov-4 Dec: National Tree Week

### DECEMBER

5 Dec: World Soil Day

7 Dec: Tree Dressing Day

25 Dec-5 Jan: 12 Days Wild

