

Use the statements below to distinguish between the different groups. All statements refer to the groups beneath them.

No legs

Earthworms

- Less than 15cm long
- reddish brown
- usually similar colour along whole body



(*Lumbricus rubellus*)

Surface feeding

- Pale in colour
- Usually pink, but may be blue-ish or green-ish



(*Octolasion cyaneum*)

Soil feeding

Larvae

- Conical shaped body
- Often white and soft



Bluebottle maggot
(*Calliphora vomitoria*)

Slugs & snails

- No shell



(*Arion ater*)

Slugs



Common garden snail
(*Helix aspersa*)

Snails

Six legs

Tough fore wings (elytra)



No tough fore wings (elytra)

No pincers

Pincers

Beetles

- Shiny
- Black or brown, sometimes metallic blue/green
- Long legs



(*Pterostichus melanarius*)

Ground beetles

You may see many species of beetle - you just need to separate ground beetles from the rest.



Rove beetle
(*Tachporus hypnorum*)

Other beetles

Earwigs



Earwig
(*Forticula auricularia*)

Ants



Blood-red ant
(*Formica sanguinea*)

More than six legs

Centipedes & millipedes

- One pairs of legs on each body segment
 - Flattened body
 - Last pair of legs are long, trailing behind body



Centipedes

- Two pairs of legs on each body segment
 - Rounded body
 - Black or brown



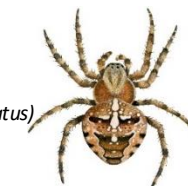
Black millipede
(*Tachypodoiulus niger*)

Millipedes

Spiders

- Eight legs

Garden spider
(*Araneus diadematus*)



Woodlice

- Thick exoskeleton with seven segments

Common rough woodlouse
(*Porcellio scaber*)

